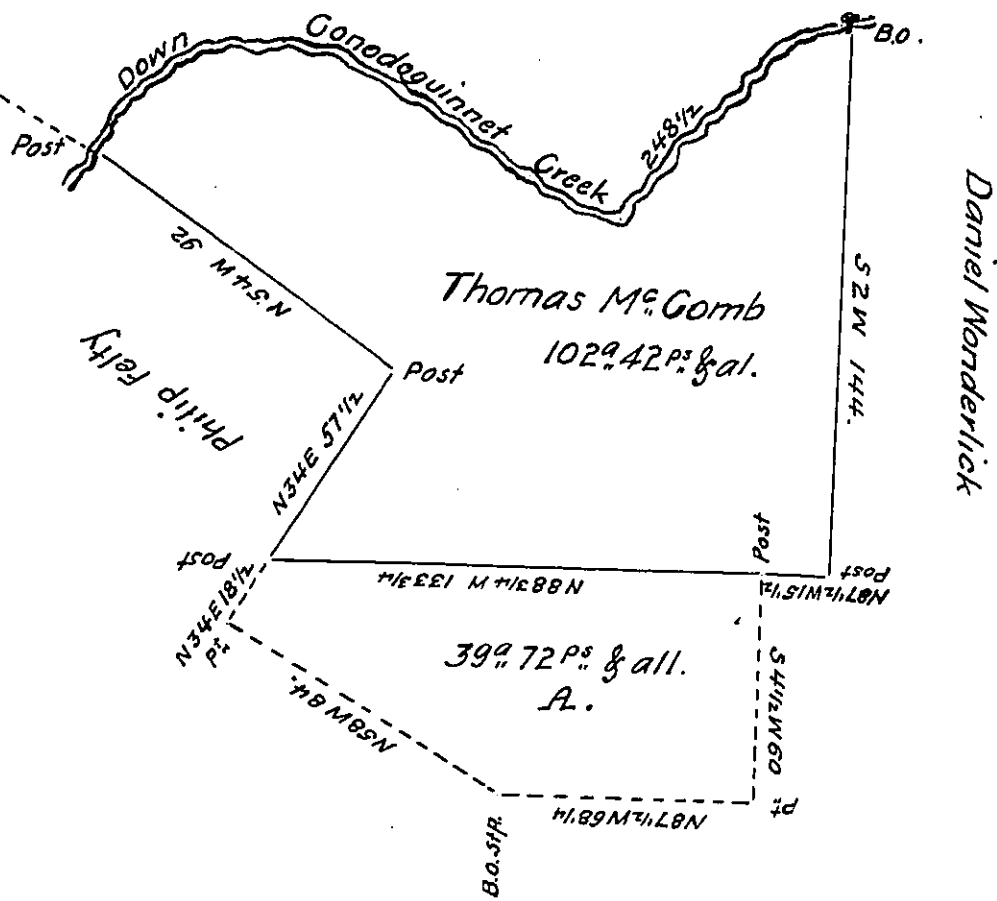


FORM NO 1.



Courses down Creek

N 20 E	13
N 69 E	40
S 88 E	23
S 55 E	13
S 62 E	56 1/2
S 36 E	17
N 45 1/2 E	86
248 1/2	

*Draught of a Tract of Land situate in Southampton Township Franklin County: Containing one hundred & two Acres & forty two perches & allowance of Six per cent for Roads &c Survey'd 15<sup>th</sup> September 1829. In pursuance of a contract with the Board of Property for carrying into effect the Several Acts of Assembly relating to unpatented Lands under Proprietary rights &c And by virtue of a Warrant dated the 26<sup>th</sup> January 1744 Granted to Thomas M<sup>c</sup> Gomb for 100 Acres on the South side of Gonodoguinnet in Hopewell Township*

To Jacob Spangler Esq<sup>r</sup> }  
 Surveyor General. } N<sup>o</sup>: 1617 ~ Pat<sup>d</sup> }  
 W<sup>m</sup>: S Davis }  
 William Hamilton } Contractors

*Report. The above Survey covers part of 140 1/2 Acres Survey'd 16 April 1768 on an order of Survey to Thomas M<sup>c</sup> Gomb dated 21 October 1766 N<sup>o</sup>: 1617 Note ~ the dotted figure A. represents the balance of Survey on the Location just Mentioned, & contains 39 Acres & 72 perches & all<sup>cs</sup> & probably might have been intended to be covered by the Warrant of 26 Jan<sup>y</sup>. 1744, but no evidence appears, of a Survey on said Warrant; or of the Land being held under the same;*

*Philip Felty Owner ~ James Mulhollern occupant. ~*

IN TESTIMONY that the above is a copy of the original remaining on file in the Department of Internal Affairs of Pennsylvania, made conformably to an Act of Assembly approved the 16th day of February, 1833, I have hereunto set my Hand and caused the Seal of said Department to be affixed at Harrisburg, this thirtieth day of January 1909.

*Henry Hoover*  
 Secretary of Internal Affairs.